



TOOL ROOM & REVERSE ENGINEERING



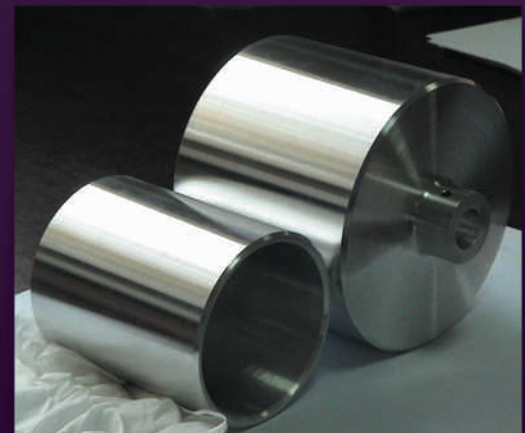
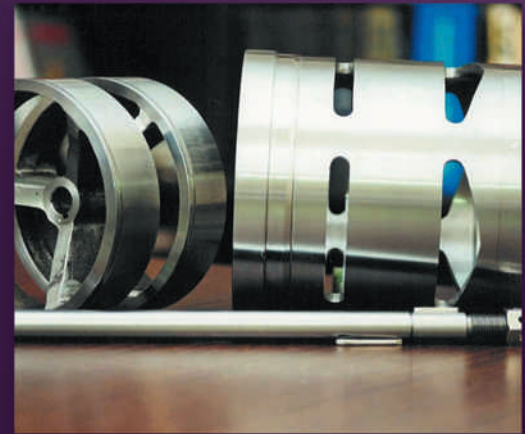
Combining traditional skills in metal cutting with the best machines in modern technology, we offer specialized services in custom manufacturing of precision components.

With a score of years with experience in precision manufacturing behind us, we have had the privilege of having been commissioned to undertake the most challenging and atypical assignments in the marketplace.

Our Tool Room proudly hosts new CNC machining centres, CNC Turn-Mill, CNC turning and CNC sliding head machines. The machines are supported by CAD and CAM capabilities and are manned by a capable and experienced workforce.

Our services extend to "Reverse Engineering" of products in which unpatented components may be duplicated or parts with limited technical data may be refined, leading to definition of specifications.

For one-off, small or medium sized job batches, we undertake a wide scope of assignments.



RESEARCH & DEVELOPMENT
ENGINEERING COMPANY

No. 176, Sector-23,
Korangi Industrial Area,
Karachi-74900, Pakistan.

Tel : (92-21) 5061004, 5067668
Fax : (92-21) 5066416
e-mail: info@r-and-d.com.pk

past endeavour - our presence - your future

www.r-and-d.com.pk